



# 2" DRY-SHUT SYSTEM

AUTO SHUT-OFF POLYPROPYLENE COUPLING  
REDUCE SPILLAGE AND WASTE

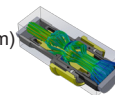
## INTRODUCING DRY-SHUT FROM CPP

The Dry-Shut from CPP is a precision moulded minimum spill coupling for low pressure liquid transfer. On disconnection the poppets automatically close and shut off the liquid flow, resulting in minimal residual loss or air inclusion. This simple ISO "A" type operation makes it easy to handle with no levers or switches to operate. Our Dry-Shut couplings are ISO 7241-1 series A (ISO-A) interchangeable.

## TECH SPEC

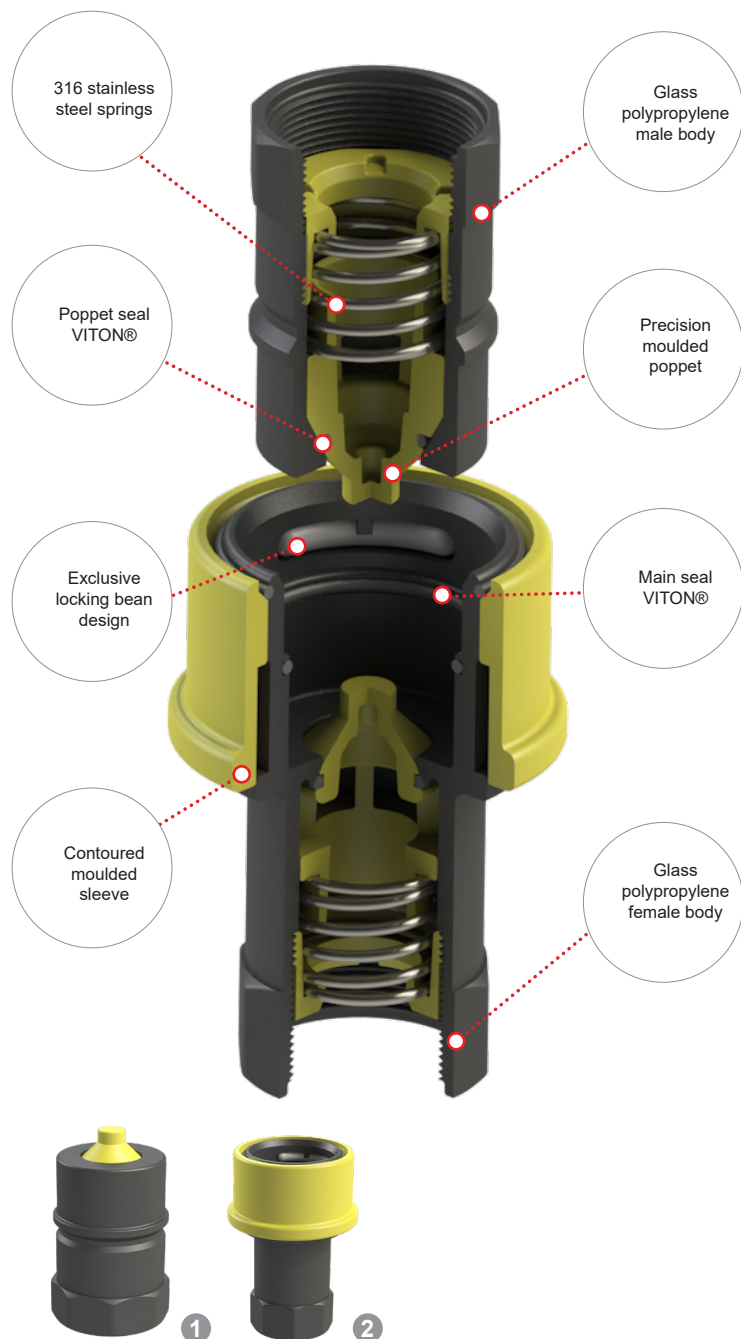
Max working pressure: 60 psi (4bar) with spikes upto 100 psi (7bar)

Flow rate: Up to 540 L/min (143 USG/pm)



COMPATIBLE: ISO 7241-1 (ISO-A)

IMPORTANT: As with other ISO-A type systems there is an approx 80ml of fluid that could discharge on opening and usual drip



	PART NUMBER	PRODUCT DESCRIPTION	
1	DS20BMVF20BV027	2" Dry-Shut male valved adapter X 2" BSP female GPP. C/W Viton seals	
2	DS20BFVF20BV027	2" Dry-Shut female valved coupler X 2" BSP female G/P/P. C/W Viton seals	



# 2" DRY-SHUT SYSTEM

STANDARD PARTS TO ADAPT IBC'S & HOSE CONNECTIONS



1



2



3



4

## IBC TANK CONVERTERS

	PART NUMBER	PRODUCT DESCRIPTION	
1	DBMFUD20B60UD027	S60X6 IBC female x BCS G2 x 11.5 (2" BSP/NPS) C/W o-ring	
2	DBMFM20B20M027	2" NPS female x BCS G2 x 11.5 (2" BSP/NPS) C/W o-ring	
3	DBMFC20B20C027	2" Camlock coupler female x BCS G2 x 11.5 (2" BSP/NPS) C/W o-ring	
4	DBMFUD20B100U027	S100X8 IBC female x BCS G2 x 11.5 (2" BSP/NPS) C/W o-ring	



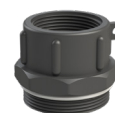
5



6



7



8

## FEMALE THREADED ADAPTORS

	PART NUMBER	PRODUCT DESCRIPTION	
5	DBMFB20B20B027	2" BSP female x BCS G2 x 11.5 (2" BSP/NPS) C/W o-ring	
6	DBMFB20B15B027	1½" BSPT female x BCS G2 x 11.5 (2" BSP/NPS) C/W o-ring	
7	DBMFN20B20N027	2" NPT female x BCS G2 x 11.5 (2" BSP/NPS) C/W o-ring	
8	DBMFN20B15N027	1½" NPT female x BCS G2 x 11.5 (2" BSP/NPS) C/W o-ring	



9



10



11



12



13

## MALE THREADED ADAPTORS

	PART NUMBER	PRODUCT DESCRIPTION	
9	DBMMB20B20B027	2" BSPT male x BCS G2 x 11.5 (2" BSP/NPS) C/W o-ring	
10	DBMMB20B15B027	1½" BSPT male x BCS G2 x 11.5 (2" BSP/NPS) C/W o-ring	
11	DBMMB20B20N027	2" NPT male x BCS G2 x 11.5 (2" BSP/NPS) C/W o-ring	
12	DBMMB20B15N027	1½" NPT male x BCS G2 x 11.5 (2" BSP/NPS) C/W o-ring	
13	DBMMB20B60UD027	S60x6 male buttress x BCS G2 x 11.5 (2" BSP/NPS) C/W o-ring	

## HOSE TAIL ADAPTORS

	PART NUMBER	PRODUCT DESCRIPTION	
14	DBMME20B20T027	2" hose tail x BCS G2 x 11.5 (2" BSP/NPS) C/W o-ring	
15	DBMME20B15T027	1½" hose tail x BCS G2 x 11.5 (2" BSP/NPS) C/W o-ring	



14



15

## TECH SPEC

At **CPP®** we have developed a range of easy fit converters, adaptors and fittings to complement our **DRY-SHUT** coupling system. They are precision moulded in our factory in the UK, all come with seals for a leak free connection.

Body Material: Polypropylene

O-rings & Gaskets: Olefin elastomer